



ASKING PRICE

**£500,000**

**Blackheath Road**

London, SE10 8PD

**GARETH  
JAMES**

## PROPERTY SUMMARY

Nestled on Blackheath Road is this delightful split-level flat which presents an excellent opportunity for those seeking a comfortable and inviting home.

2



1



1



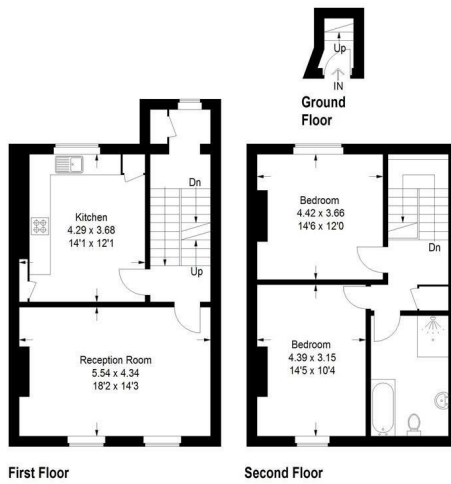






**Blackheath Road, SE10**

Approximate Gross Internal Area  
94.8 sq m / 1020 sq ft

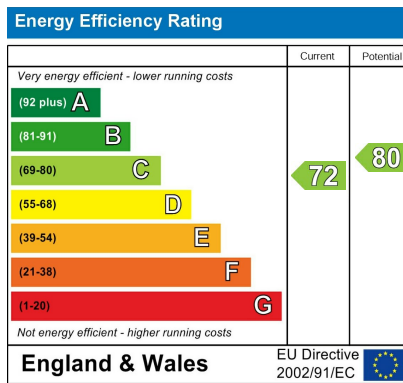


This plan is for layout guidance only. Not drawn to scale unless stated. Windows and door openings are approximate. Whilst every care is taken in the preparation of this plan, please check all dimensions, shapes and compass bearings before making any decisions reliant upon them. (D1296097)

2 |

1 |

1 |



Agents Note: Whilst every care has been taken to prepare these particulars, they are for guidance purposes only. All measurements are approximate and are for general guidance purposes only and whilst every care has been taken to ensure their accuracy, they should not be relied upon and potential buyers/tenants are advised to recheck the measurements

<b>GARETH JAMES</b>	<b>OFFICE ADDRESS</b>	<b>OFFICE DETAILS</b>
	129 Bellenden Road London SE15 4QY	02077324330 sales@garethjames.com <a href="https://www.garethjames.com/">https://www.garethjames.com/</a>